



## SPARE PARTS LIST

Household washing machines

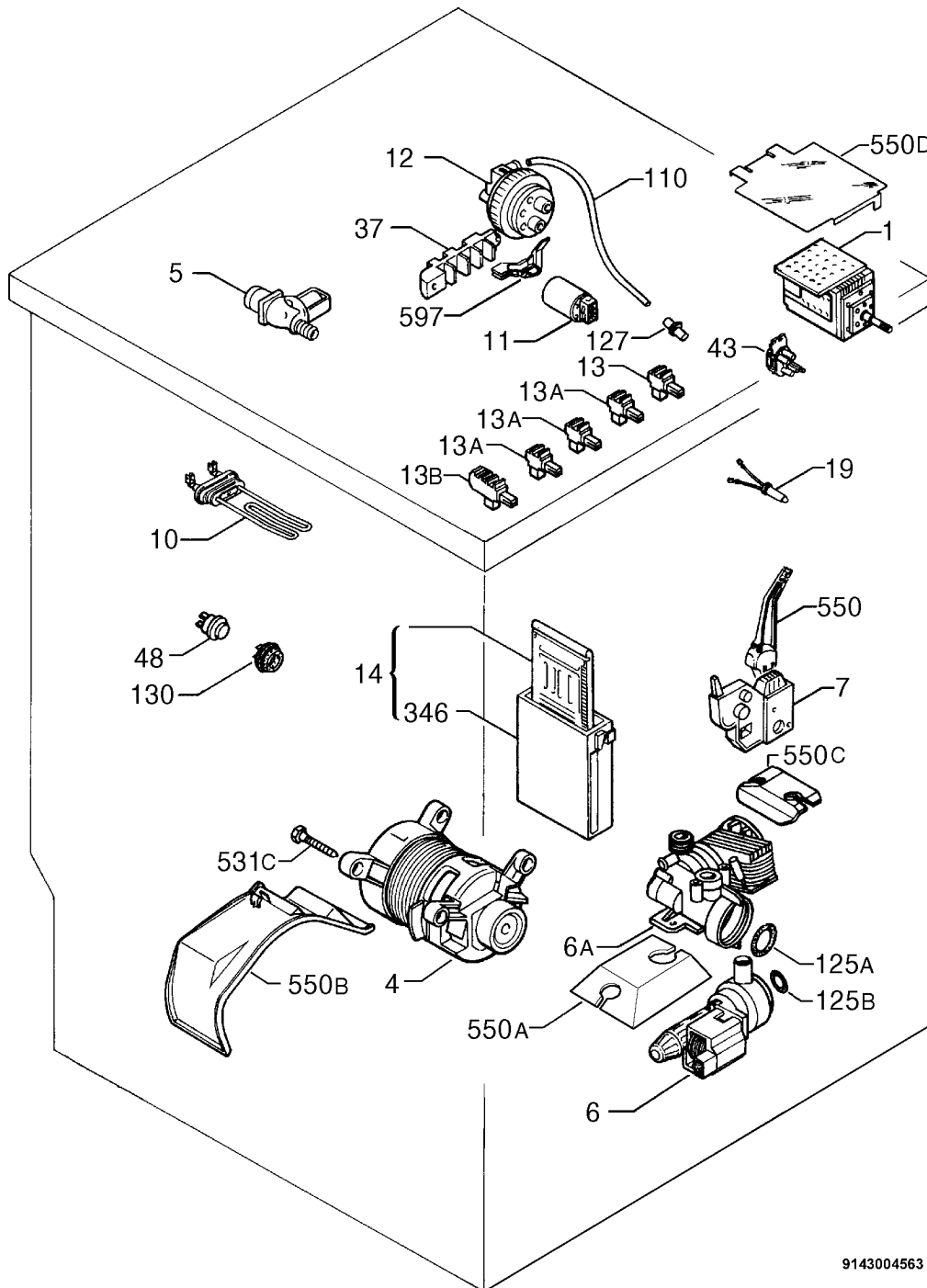
2520

	<b>PNC</b>	<b>Brand</b>	<b>Model</b>	<b>Market</b>
A	914759007	AEG	LAVAMAT1045S	CZ - HU - SK

AEG Hausgeräte GmbH  
Muggenhofer Straße 135  
D-90429 Nürnberg  
Germany  
Fax +49 (0)911 323 1420

Publ.No.  
**599343109**  
**2000/10/6**  
ZP

Washing machines,  
front-loaded

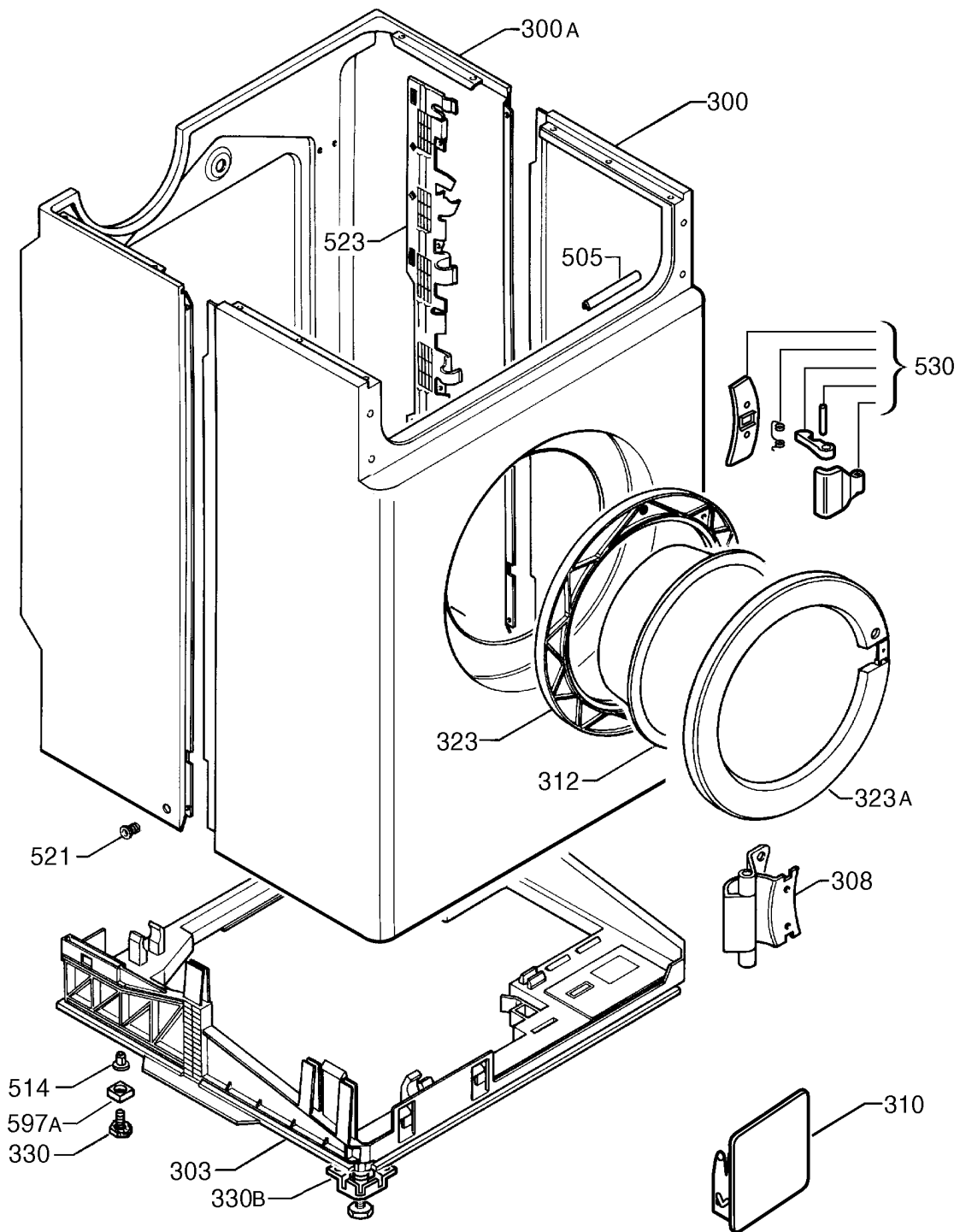


9143004563

<b>PNC</b>	<b>Model</b>
A 914759007	LAVAMAT1045S

Pos	Part No.		Description
001	1249 20 000 / 5	A	Timer,VABC20/30J AKO
004	1242 70 704 / 8	A	commutator motor,10/1200 SOLE
005	50234 43 800 / 5	A	Valve,enema
006	1240 31 001 / 9	A	drain pump,plaset
006A	1240 79 420 / 4	A	recirculation pump,ASKOLL 220/240V-50HZ
007	50226 73 500 / 4	A	Kit,delayer,porthole
010	1247 26 500 / 0	A	heater
011	1240 34 360 / 6	A	filter,anti-interference
012	1247 32 830 / 3	A	Level-switch,2-triple,+ Sicherheit
	1247 32 840 / 2	A	Level-switch,1-triple,overflow protec
013	1245 40 400 / 7	A	keyboard
013A	1245 40 800 / 8	A	push botton board
013B	1245 40 600 / 2	A	push botton board
014	1249 28 300 / 1	A	card,motor control,VA30J
019	50223 55 900 / 1	A	Signalling lamp,red
037	1240 20 930 / 2	A	cable block
043	1246 20 600 / 5	A	potentiometer
048	1246 20 800 / 1	A	Sensor,temperature,NTC / CROUZET
110	1240 17 000 / 9	A	Pipe,L=677mm,level-switch
	1240 83 410 / 9	A	Pipe
125A	1240 15 310 / 4	A	locking ring,connector,Pump
125B	50221 74 700 / 4	A	locking ring,o-ring,Pump,(29,82)
127	1242 68 100 / 3	A	Connection piece
130	1240 15 203 / 1	A	gasket,Thermostat,Probe
346	1249 04 700 / 0	A	Housing,electronics
531C	1240 22 200 / 8	A	Screw,main motor,bob
550	1240 07 508 / 3	A	Protection,delayer,Door
550A	1245 89 500 / 6	A	guard,drain pump
550B	1246 48 900 / 7	A	guard,main motor,G17/18
550C	1249 20 900 / 6	A	guard,recirculation pump,SPIR/KOREA
550D	1242 47 402 / 9	A	cover,(timer)
597	1240 06 200 / 8	A	stopper,Capacitor,Cable
999	1241 10 500 / 4	A	Harness,124.11050/
	1241 49 900 / 1	A	Harness,124.14990/
	1243 40 410 / 8	A	Harness,earth
	1248 65 270 / 1	A	Harness,connec.sleeve,fastener
	1249 01 231 / 9	A	supply cable,2000x3x1'5
	1249 07 320 / 4	A	Harness,124.90732/
	1249 07 500 / 1	A	Harness,124.90750/
	1249 07 600 / 9	A	Harness,124.90760/
	1249 07 700 / 7	A	Harness,124.90770/
	1249 07 900 / 3	A	Wiring harness
	1249 08 120 / 7	A	Harness,124.90812/
	1249 08 221 / 3	A	Harness,124.90822/

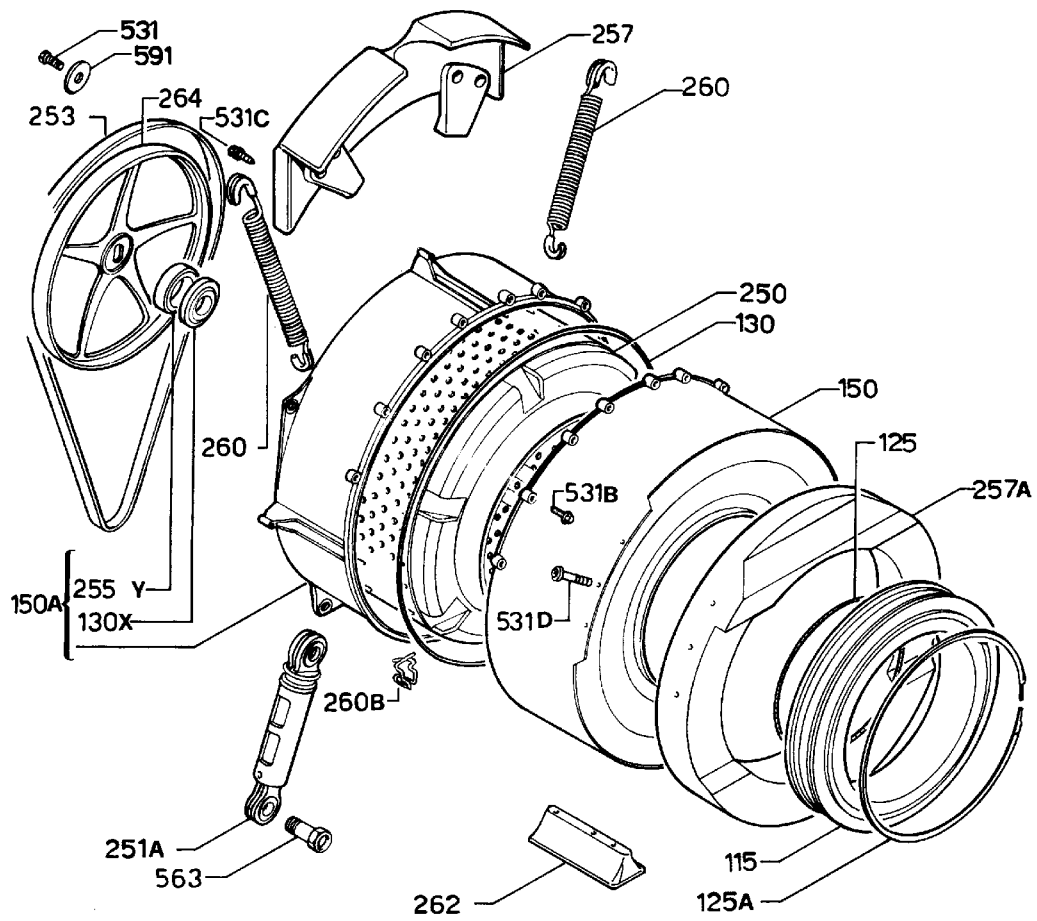
999	1249 09 110 / 7	A	Harness,124.90911/
	1249 60 910 / 6	A	Harness
	1249 61 620 / 0	A	Harness



9143004564

<b>A</b>	<b>PNC</b> 914759007	<b>Model</b> LAVAMAT1045S
----------	-------------------------	------------------------------

<b>Pos</b>	<b>Part No.</b>		<b>Description</b>
300	1247 25 373 / 3	A	cabinet,front,white,P61/5/S
300A	1246 80 535 / 0	A	Housing,behind
303	1248 08 117 / 4	A	stand,P61
308	1240 13 600 / 0	A	Hinge,bull's eye
310	1242 75 801 / 7	A	sieve flap
312	50097 05 200 / 0	A	bull's eye
323	1246 43 700 / 6	A	a-frame,porthole,back
323A	1246 43 600 / 8	A	a-frame,porthole,front
330	50226 26 200 / 9	A	Kit,Foot,ferrule
330B	1245 26 400 / 5	A	assembly,Foot,front,20mm
505	1249 02 910 / 7	A	Profile tape
514	1247 84 200 / 6	A	locking bush,Foot,back
521	1246 44 500 / 9	A	Bung,clamp,cabinet
523	1240 06 500 / 1	A	Bracket,Hose,Wiring
530	50252 29 800 / 0	A	Kit,Handle,porthole
597A	1247 12 110 / 4	A	lock,Foot,back
999	1329 98 050 / 0	A	Instruction book,(hu-sk)
	1329 99 210 / 9	A	Instruction book,(en-cs)
	50225 13 400 / 1	A	Lock pin,assy

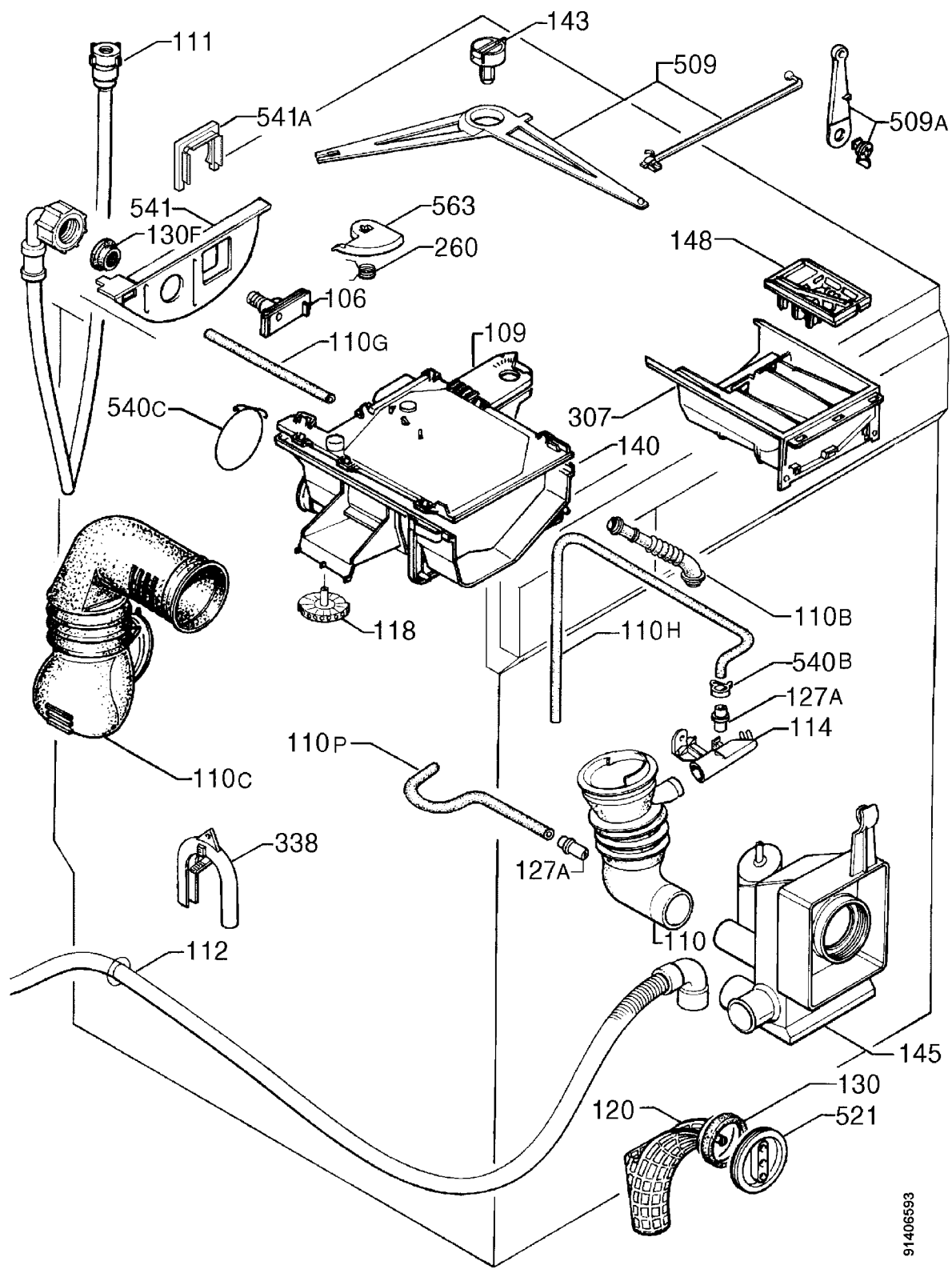


9143004005

<b>A</b>	<b>PNC</b> 914759007	<b>Model</b> LAVAMAT1045S
----------	-------------------------	------------------------------

<b>Pos</b>	<b>Part No.</b>		<b>Description</b>
115	1240 16 791 / 4	A	rubber bellow,porthole,G20 OLDR.
125	50068 76 300 / 7	A	connection ring,rubber bellow,tub
125A	50097 07 200 / 8	A	lock ring,rubber bellow,cabinet
130	1240 15 903 / 6	A	gasket,tub
130X	1246 10 900 / 1	A	sealing piece,drum shaft
150	1246 11 001 / 7	A	,front,tub,G18
150A	1246 11 340 / 9	A	assembly,tub,back
250	1242 60 019 / 3	A	Drum,assy
251A	1240 17 210 / 4	A	Shock absorber
253	1240 21 120 / 9	A	belt,rubber,1280J5
255Y	1240 46 300 / 8	A	bearing,30x60x37
257	1246 11 700 / 4	A	WEIGHT COUNTER-,REAR
257A	1245 42 920 / 2	A	bob,front,Kg 13,5 G18/19 DSWD
260	1240 19 501 / 4	A	Spring,suspension,tub
260B	1247 82 510 / 0	A	retaining spring,heater
262	50250 95 200 / 4	A	Kit,mill,Screw
264	1246 11 600 / 6	A	WHEEL DRIVE-,G18
531	1240 21 910 / 3	A	Screw,f.pulley
531B	1242 72 500 / 8	A	Screw,lock,tub
531C	1240 22 310 / 5	A	Screw,yoke,behind
531D	1249 27 300 / 2	A	Screw,bob,front
563	1240 04 121 / 8	A	bolt,cushion
591	1240 50 200 / 3	A	Washer,Screw,pulley
999	1240 22 000 / 2	A	Screw,bearing spider
	50239 96 100 / 1	A	assembly,cross piece,basket

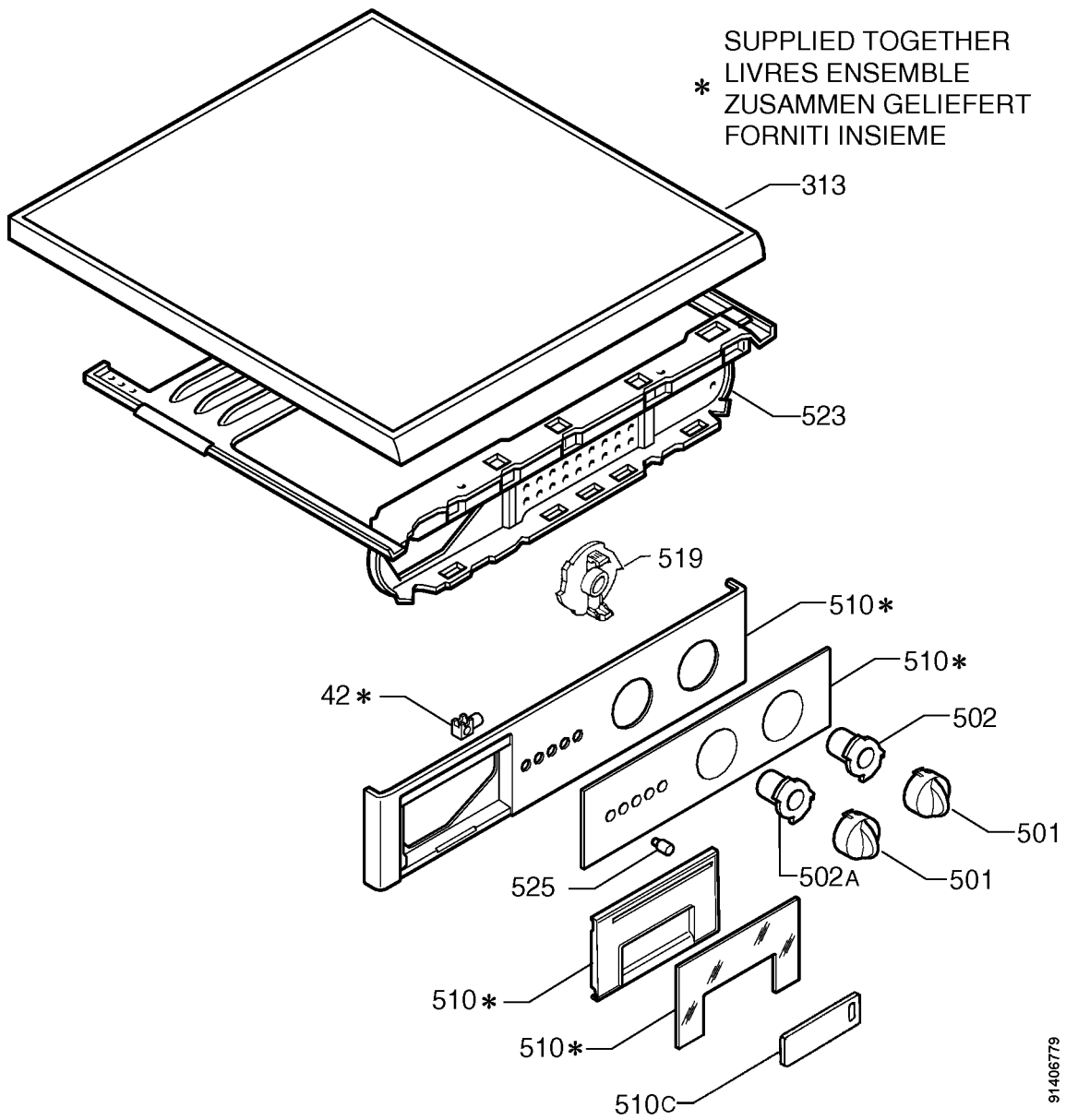




91406593

<b>A</b>	<b>PNC</b> 914759007	<b>Model</b> LAVAMAT1045S
----------	-------------------------	------------------------------

<b>Pos</b>	<b>Part No.</b>		<b>Description</b>
106	1246 23 110 / 2	A	Jet,solenoid valve
109	1246 24 600 / 1	A	conveyor,Container cup,detergent
110	1240 83 112 / 1	A	drain hose,tub,manifold
110B	1240 16 210 / 5	A	Breather hose
110C	1246 60 412 / 6	A	Hose,fill,detergent
110G	1247 34 251 / 0	A	Tube,electric valve,container cup,L=138
110H	1242 66 000 / 7	A	Connection hose
110P	1240 00 640 / 1	A	Hose,circulation,drain pump
111	1240 17 174 / 2	A	inlet hose,water
112	1240 88 110 / 0	A	Draining hose
114	1240 83 233 / 5	A	air chamber
118	1246 24 510 / 2	A	water distributor
120	1240 08 802 / 9	A	Fluff strainer
127A	1240 00 100 / 6	A	tube connection,circulation
130	1240 14 900 / 3	A	sieve seal
130F	1240 15 100 / 9	A	sealing
140	1246 23 321 / 5	A	Container cup,detergent,P61 G18
143	1240 10 100 / 4	A	adjuster,Distributor,water
145	1240 14 360 / 0	A	Filter case,assy
148	1246 24 200 / 0	A	syphon,soap drawer
260	1240 14 800 / 5	A	Spring,Distributor,Container cup
307	1246 24 310 / 7	A	detergent drawer,3SC/RID
338	1242 91 600 / 3	A	end piece,Drainage hose
509	1247 42 800 / 4	A	lever,water distributor
509A	1240 04 400 / 6	A	Cam lever
521	1240 08 610 / 6	A	stopper,closure,fluff filter
540B	1242 68 200 / 1	A	hose clamp,Hose,circulation
540C	1246 64 600 / 2	A	Tube clip
541	1246 08 620 / 9	A	Hose holder
541A	1247 34 103 / 3	A	Holder,solenoid
563	1240 04 200 / 0	A	bolt,Distributor



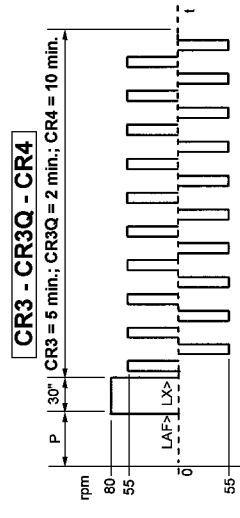
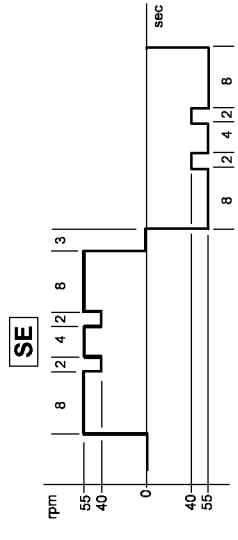
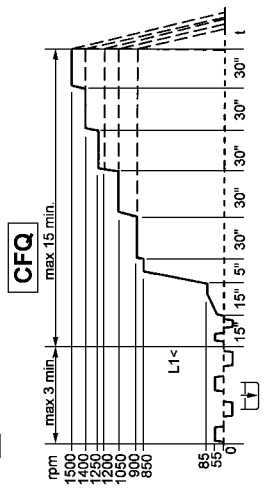
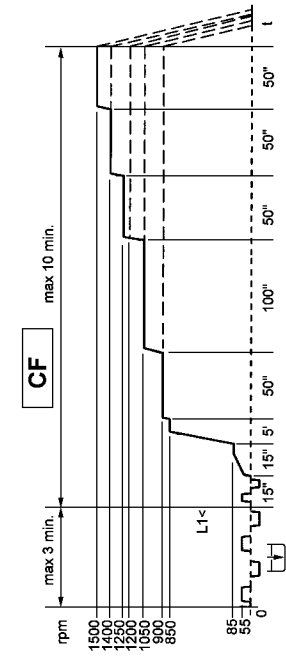
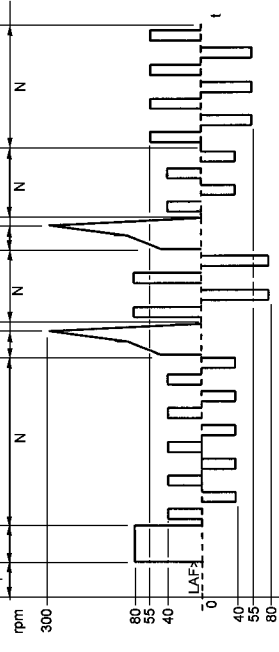
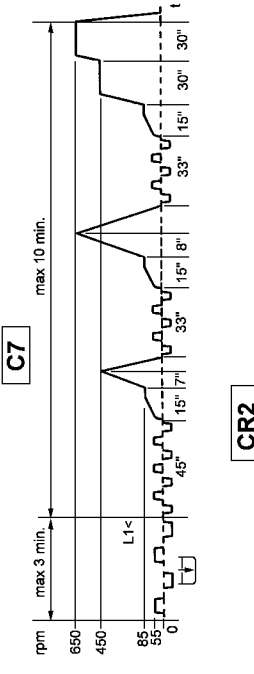
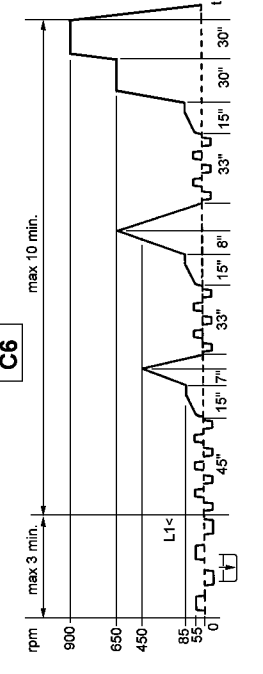
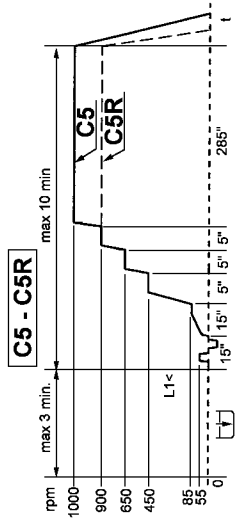
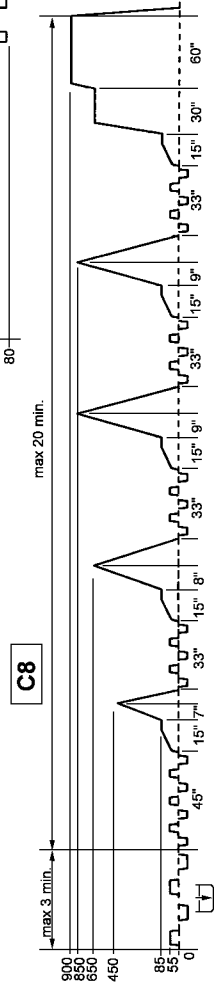
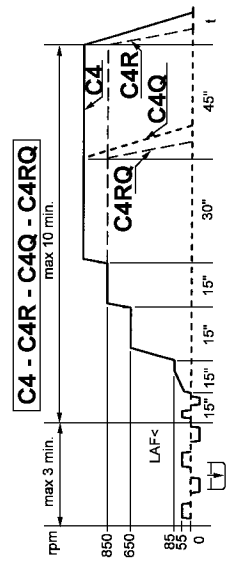
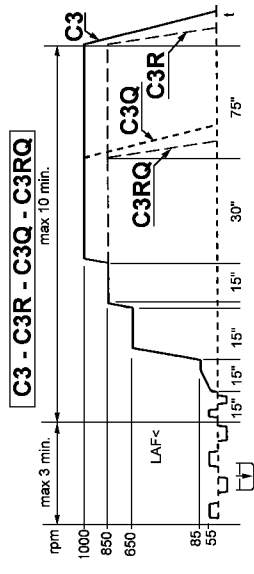
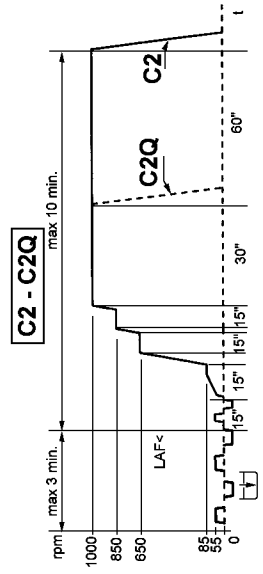
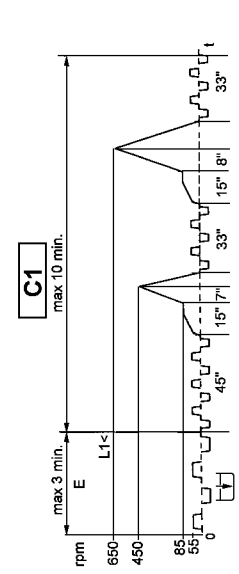
91406779

---

<b>A</b>	<b>PNC</b> 914759007	<b>Model</b> LAVAMAT1045S
----------	-------------------------	------------------------------

<b>Pos</b>	<b>Part No.</b>		<b>Description</b>
042	1248 15 000 / 3	A	lampholder,assy
313	50237 27 900 / 0	A	Table top
501	1248 32 900 / 3	A	Toggle cap
502	1247 94 310 / 1	A	Toggle,lower part,timer
502A	1247 93 810 / 1	A	Toggle,lower part,thermostat
510	1246 17 380 / 9	A	Control panel,Handle,silkscreened
510C	1243 05 940 / 7	A	programme card,(cs)
519	1249 20 200 / 1	A	cam,VABC 20/30J
523	1242 23 440 / 7	A	Bracket,command,P61/65S
525	1247 93 110 / 6	A	Push button,push botton board





MOTOR	ON (sec)	OFF (sec)	RPM
SED	27	3	55
SE	27	3	55/40
E	8	4	55
N	8	8	55
D	4	12	55
D1	4	12	33
D2	2	28	33
D3	2	58	33

V/A30SPIN

# VC30J

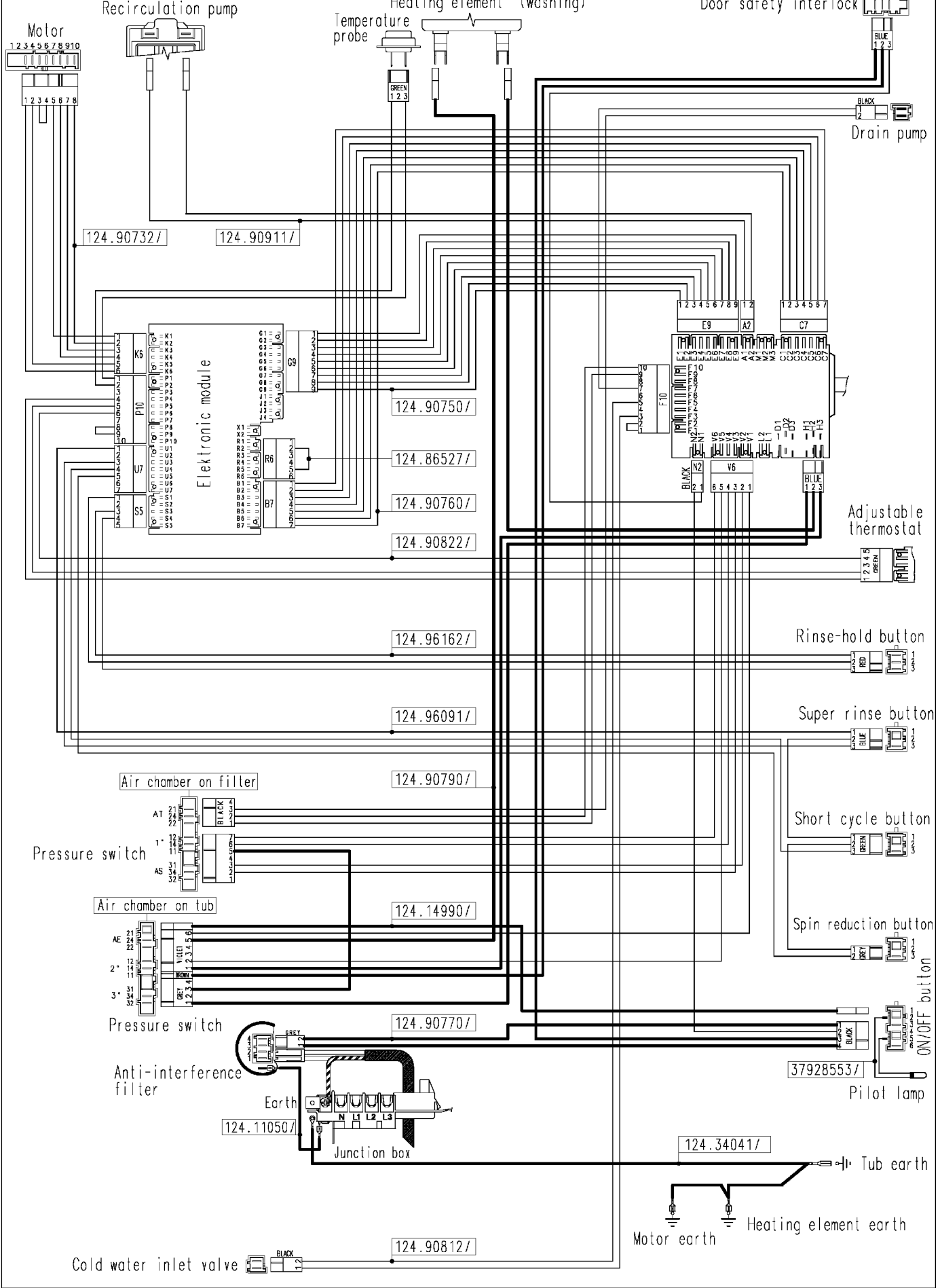
# COTTONS

WASH PHASES	U												U					U					U									
	1	2	3	4	5	6	7	8	9	10	11	12	13	14	15	16	17	18	19	20	21	22	23	24	25	26	27					
STEP NO.	A	B	A	B	C																											
ACTIONS	●																															
PROGRAMME STARTING POINTS	U																															
DETERGENT DRAWER																																
TEMPERATURE (°C)	40	40				30			40		60	40	90	40																		
MOTOR ACTION	N	D	N	D	3	-	C	1	-	CR4	E	E	E	N	E	N	C3R	CR2	3Q	CR3	C4	CR3	-	C1	CF	D1	SED	DPS				
MAX. DURATION (MINUTES)	P	T	4	20	∞	10	∞	10	∞	P	T	10	10	0,4	2	(10)	P	7	2	P	5	(10)	P	5	∞	(15)	(15)	10	T	∞		
WATER INTAKE: 3rd LEV.																																
WATER INTAKE: BY TIME (24 SEC)																																
WATER INTAKE 2nd LEV.																																
WATER INTAKE: 1st LEV.																																
EMPTY CONDITION																																
70° - 90°	→	→	→	→	→	→	→	→	→	→	→	→	→	→	→	→	→	→	→	→	→	→	→	→	→	→	→	→	→	→		
0° - 60°																																
INTENSIVE - 60°																																
60°																																
40°																																
QUICK WASH: 0° - 90°																																
QUICK WASH: 60°																																
QUICK WASH: 40°																																
BIO 70° - 90°																																
BIO INTENSIVE 60°																																
BIO 60°																																
EXTRA RINSE																																
SOAK																																
EXTRA PREWASH (GB)																																
STAIN																																
AUTODRY																																
G13 TUB																																
VC30CA-EN																																





124 871241b



## P00ZP300000972

Adjustable thermostat	Adjustable thermostat
Air chamber on filter	Air chamber on filter
Air chamber on tub	Air chamber on tub
Anti-interference filter	Anti-interference filter
Cold water inlet valve	Cold water inlet valve
Door safety interlok	Door safety interlok
Drain pump	Drain pump
Earth	Earth
Electronic module	Electronic module
Heating element earth	Heating element earth
Heating elements (washing)	
Heating elements (washing)	
Hot water inlet valve	Hot water inlet valve
Junction box	Junction box
Motor	Motor
Motor earth	Motor earth
Motor overload cut-out	Motor overload cut-out
ON/OFF button	ON/OFF button
Pilot lamp	Pilot lamp
Pressure switch	Pressure switch
Recirculation pump	Recirculation pump
Rinse hold button	Rinse hold button
Short cycle button	Short cycle button
Spin reduction button	Spin reduction button
Super rinse button	Super rinse button
Timer motor	Timer motor
Temperature probe	Temperature probe
Tub earth	Tub earth
Violet	Violet
Red	Red
Grey	Grey
Green	Green
Green-yellow	Green-yellow
Brown	Brown
Blue	Blue
Black	Black

